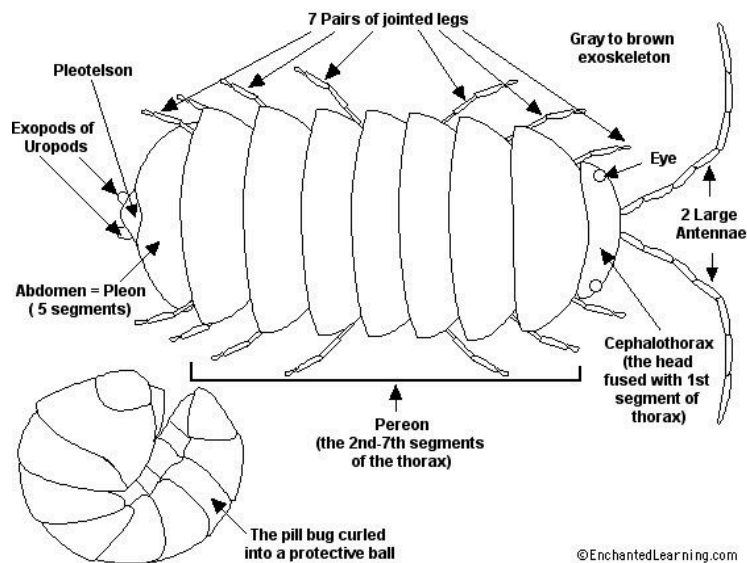


Biomimética / biomimicry

Let's ask nature how to solve problems

Instructions: Follow today's work step by step.

A. Observe and learn: Explain **three characteristics** that you observed in the body of **pill bugs** (roly-polies / woodlice).



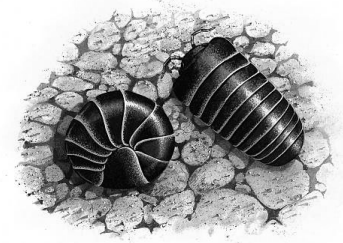
1. _____

2. _____

3. _____

B. Imagine and Plan:

- After discussing with your group, make a choice of the selected idea then draw the object you will create inspired by the characteristics of **pill bugs** to solve a **real problem or need**. Make sure to add labels and details.



- Explain what the invention you will make **with your partner** will be, and how it will be **inspired by pill bugs (roly-polies)**.

- What materials will you represent in your prototype to **make your invention sustainable** in its production and consumption?

Now you are ready to start prototyping your design!